

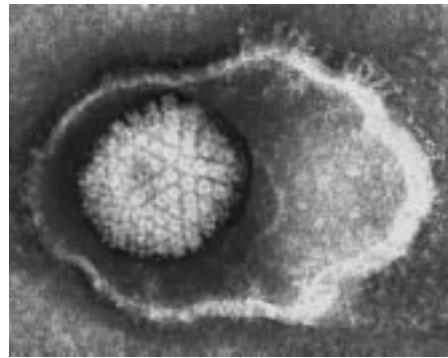


Survey

Congenital cytomegalovirus infection

Effective March 1, 2005, a new CPSP study will be launched on congenital cytomegalovirus (CMV) infection.

This pre-study survey is designed to increase awareness and to collect baseline data on present diagnostic procedures used by Canadian paediatricians and paediatric subspecialists.



Cytomegalovirus

You see a three-day old infant in the newborn nursery who has symptoms and signs suggestive of congenital CMV infection.

If you had to choose only one test to confirm this diagnosis, which one of the following tests would you order?

- CMV IgG and IgM on cord blood
- Throat swab for CMV culture or PCR
- TORCH serology
- Urine specimen for CMV culture or PCR
- Unknown

Please return this survey with your monthly reporting form.

Thank you for your participation.